

Kalmiopsis Community Arts High School

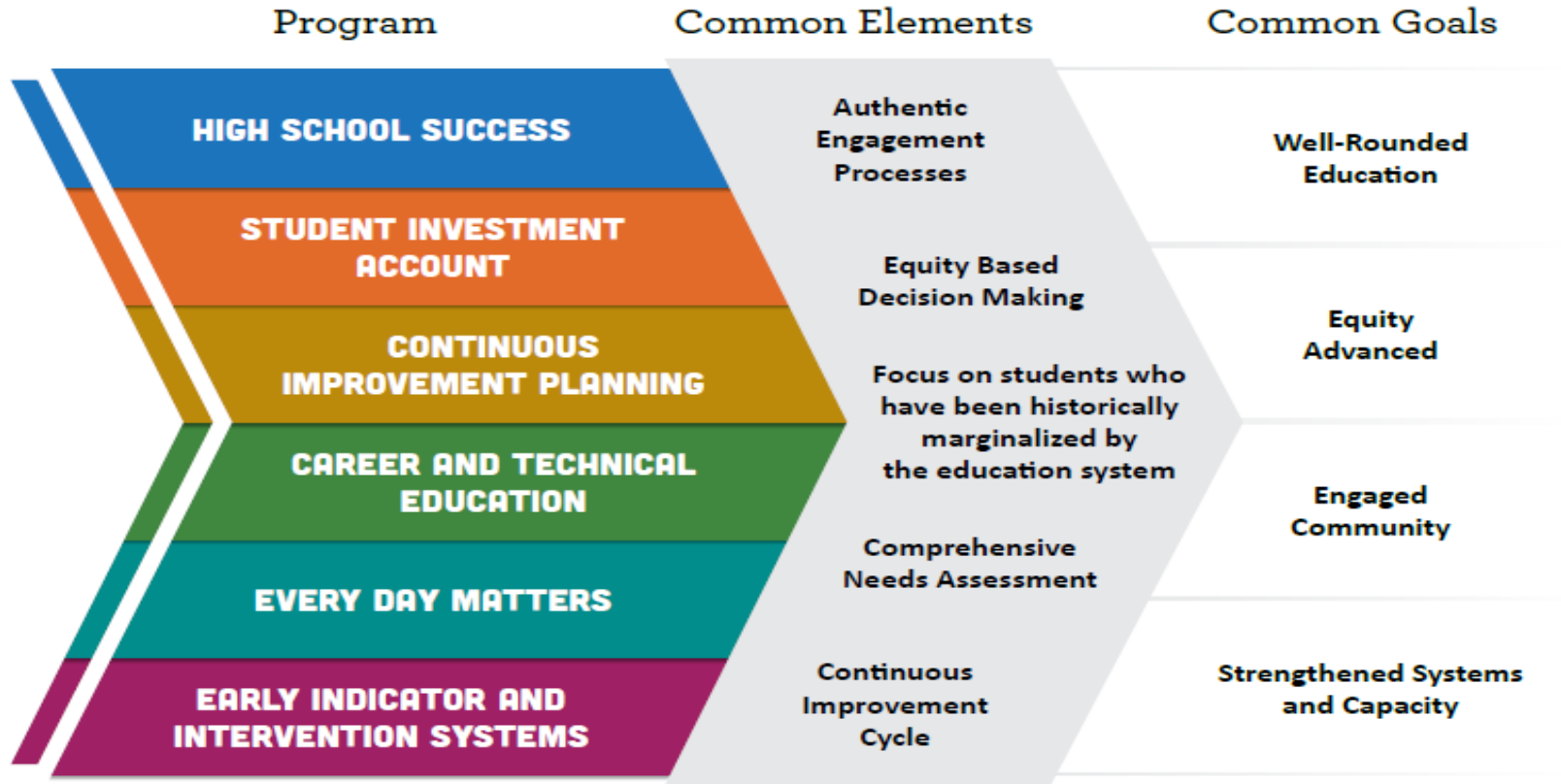
2025 Integrated Grants
Application
[Under the TRSD Umbrella]

Table of Contents

- 1) Describe the six Integrated Grants
- 2) Explain how the plan was developed
- 3) Share funding priorities based on parents/families, students, and staff feedback
- 4) Hear additional feedback through public comment
- 5) Seek KCA Board approval for the plan
- 6) If approved, submit KCA's application under the umbrella of TRSD



Six Grants in the Integrated Application



Summary of Program Purposes

KCA is eligible for HSS, SIA, and EIIS for the 2025-2027 funding cycle

High School Success (HSS) - Improve graduation rates and college/career readiness.

Student Investment Account (SIA) – Support students' mental health needs, and to increase academic achievement/reduce disparities for student focal groups.

Continuous Improvement Planning (CIP) – Support educator collaboration, data analysis, professional learning, and reflection toward improved outcomes for students, especially students experiencing disparity.

Career and Technical Education - Perkins V (CTE) - Improve access and participation in education and training programs that prepare learners for high-wage, high-skill, in-demand careers.

Early Indicator and Intervention System (EIIS) - Development of data collection and analysis systems in which educators collaborate to identify supports for students.

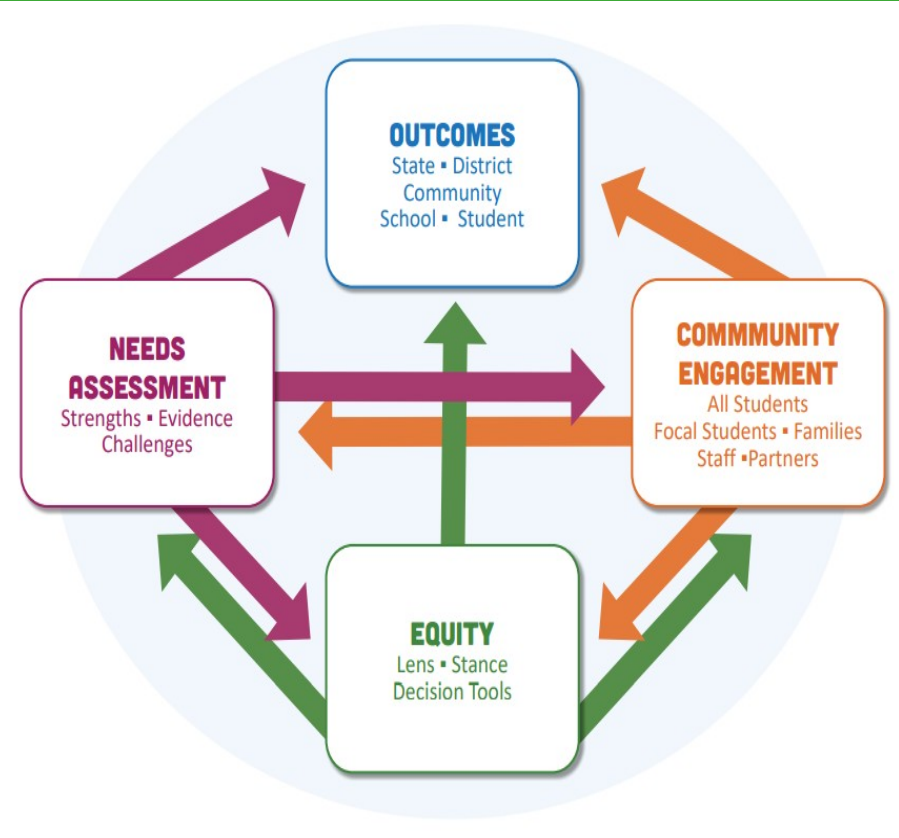
Every Day Matters (EDM) - Embedded across the five other programs, focuses attention on student engagement, school culture, climate/safety & culturally sustaining pedagogy.

Estimated Funding Allocations for KCA

Grant	Estimated Allocation 2025-2026	Estimated Allocation 2026-2027
Student Investment Account	\$29,401.63	\$30,601.70
High School Success	\$24,829.89	\$25,843.36
Early Indicator and Intervention System	\$98.01	\$98.01
Total	\$54,329.53	\$56,543.07

Application Process

- Hold “Community Engagement” events for parents/families, students, and staff to evaluate the school’s unmet needs and propose solutions
- Develop a two-year budgeted plan with clear outcomes, strategies, and activities to address the unmet needs
- Ensure the plan uses an equity lens, aligns with allowable expenses, and addresses stakeholder priorities



Community Engagement

Parents/Families

“Cuppa Needs” Coffee & Tea with the Staff (3/11/25)

Survey (ongoing)

Staff

“Staff Engagement!” Meeting (3/06/25)

Students

“What Does KCA Need?” Communiy Class (3/10/25)

Cuppa Needs

**What's working at KCA?
What do we need?**

**6PM-8PM
DROP-IN**



**COFFEE!
TEA!**

**TUESDAY 3/11/25
ALL FAMILIES!**

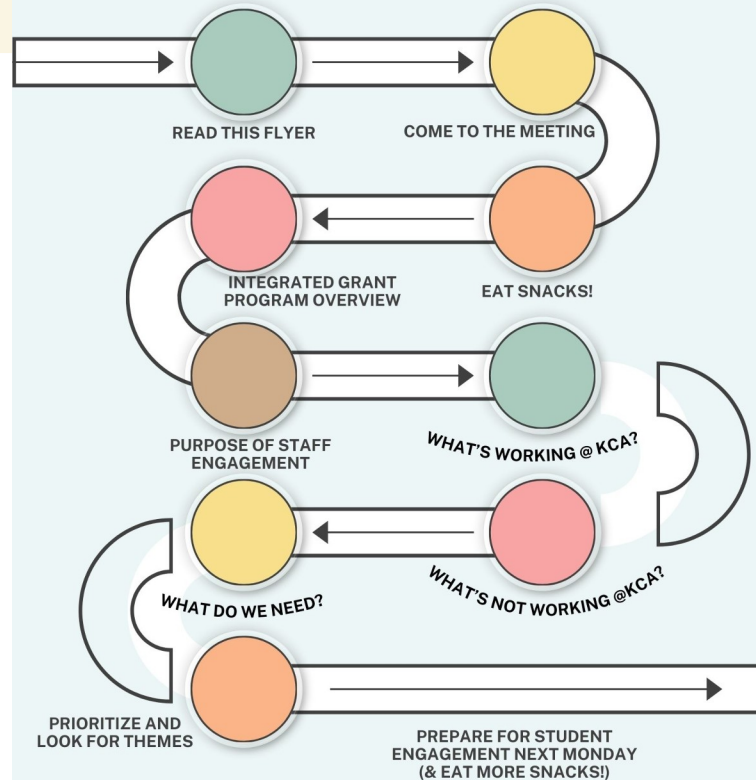
**KALMIOPSIS COMMUNITY
ARTS HIGH SCHOOL**

139 S. Caves Ave, Cave Junction OR 97523



STAFF ENGAGEMENT!!

THURSDAY 03/06/25
4PM IN THE KALMIOPSIS CORNER CLASSROOM





What Does KCA Need?

**Bring Your Opinions
and Ideas to
Community Class on
Monday!**



You can also submit feedback to the
Anonymous Jar or email
office@kcahs.org



KCA's Community Engagement Results 2025

Priorities (within allowable costs):

- **Mental Health Counseling**
- **1:1 College & Career Support**
- **Access to Advanced Coursework**

Plan for Allocations

(1) Student Investment Account (SIA): Y1 = \$29,401.63; Y2 = \$30,601.70

(a) Provide mental health counseling from contracted services

(2) High School Success (HSS): Y1 = \$24,829.89; Y2 = \$25,843.36

(a) Fund tuition for Rogue Community College “College Now!” program

(b) Offer Project Youth+ academic counseling to support college and career preparation

(3) Early Indicator and Intervention System (EIS): Y1 = \$98.01; Y2 = \$98.01

(a) Purchase Synergy MTSS to accurately track attendance data

Final Steps

- | | |
|------------------------|---|
| April 7 th | KCA Board Approves Integrated Grants Application
to be submitted under TRSD umbrella |
| April 16 th | TRSD Board Approves Integrated Grants Application
to include charter schools' applications |
| July 1 st | Funding released for 25-26 fiscal year (if approved) |